



TOWN OF RIDGEFIELD

Building Department

As the Owner of the property located at _____

I hereby acknowledge the following:

- ✓ I have received the booklet entitled,
"Swimming Pool, Spa and Hot Tub Requirements," from the Town of
Ridgefield Building Department
- ✓ I acknowledge that the requirements contained in the booklet are part of
the 2022 Connecticut State Building Code.
- ✓ The Swimming Pool, Pool & Spa, or Hot Tub to be installed on my property
will comply with all the requirements of the 2022 Connecticut State
Building Code as comprised of the model documents of the 2021
International Swimming Pool and Spa Code, 2020 National Electrical Code,
2021 International Energy Conservation Code and their respective
amendments as part of the 2022 CSBC
- ✓ The requirements set-forth in the 2022 Connecticut State Building Code for
the installation of swimming pools and spa shall be completed prior to the
final inspection or any other required inspections and issuance of
Certificate of Occupancy
- ✓ As owner I will be responsible for the installation and maintenance of all
temporary fencing and safety devices prior to the installation of any in-
ground swimming pool or spa unless a permanent barrier is in place prior to
the commencement of the installation.

Property Owner's Signature: _____ Date: _____

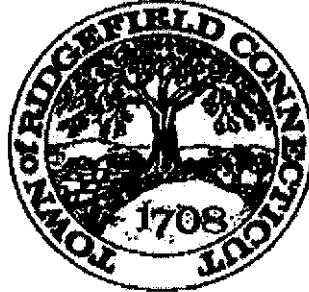
Property Owner's Name: _____

(Print or Type)

Note: This form must be notarized

**Town of Ridgefield Building Department
66 Prospect Street- Town Hall Annex**

OFFICE HOURS: 8AM – 4PM – MONDAY – FRIDAY -PHONE (203) 431 2743



Required Inspections

Inground swimming pool and spas-

- 1.) Cage Structure Bonding**
- 2.) Suction outlet separation**
- 3.) Light Niche bonding**
- 4.) Underground conduits and piping**
- 5.) Pool light potting**
- 6.) Equi-potential Bonding**
- 7.) Final**

Above ground pools –

- 1.) Equi-potential bonding**
- 2.) Final**

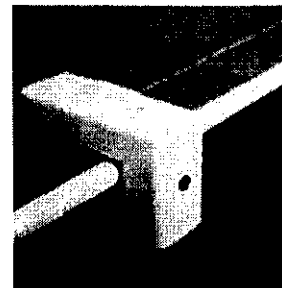
Self contained spas (factory built hot tubs) –

- 1.) Underground conduits, if applicable**
- 2.) Final**

Note: Zoning certificates of compliance must be issued prior to request for final inspection

Pool Alarm

Pursuant section 29-265a of the Connecticut General Statutes, NO BUILDING PERMIT shall be issued for the construction or substantial alteration of a residential swimming pool at a residence occupied by, or being built for, one or more families unless a pool alarm is installed with the swimming pool. As used in this section, "pool alarm" means a device that emits a sound of at least 50 decibels when a person or an object weighing 15 pounds or more enters the water in a swimming pool. Hot tubs and portable spas shall be exempt from this requirement.



SECTION 305 BARRIER REQUIREMENTS

305.1 General. The provisions of this section shall apply to the design of barriers for restricting entry into areas having pools and spas. Where spas or hot tubs are equipped with a lockable *safety cover* complying with ASTM F1346 and swimming pools are equipped with a powered *safety cover* that complies with ASTM F1346, the areas where those spas, hot tubs or pools are located shall not be required to comply with Sections 305.2 through 305.7.

305.1.1 Construction fencing required. A temporary enclosure shall be installed for in ground swimming pools and spas from the time that construction occurs up to the time that the permanent barrier is completed. The temporary enclosure shall be a minimum of 4 feet in height, shall have no openings that will allow the passage of a 4-inch sphere and shall be equipped with a positive latching device

305.2 Outdoor swimming pools and spas. Outdoor pools and spas and indoor swimming pools shall be surrounded by a barrier that complies with Sections 305.2.1 through 305.7.

305.2.1 Barrier height and clearances. Barrier heights and clearances shall be in accordance with all of the following:

1. The top of the barrier shall be not less than 48 inches (1219 mm) above grade where measured on the side of the barrier that faces away from the pool or spa. Such height shall exist around the entire perimeter of the barrier and for a distance of 3 feet (914 mm) measured horizontally from the outside of the required barrier.
2. The vertical clearance between grade and the bottom of the barrier shall not exceed 2 inches (51 mm) for grade surfaces that are not solid, such as grass or gravel, where measured on the side of the barrier that faces away from the pool or spa.
3. The vertical clearance between a surface below the barrier to a solid surface, such as concrete, and the bottom of the required barrier shall not exceed 4 inches (102 mm) where measured on the side of the required barrier that faces away from the pool or spa.
4. Where the top of the pool or spa structure is above grade, the barrier shall be installed on grade or shall be mounted on top of the pool or spa structure. Where the barrier is mounted on the top of the pool or spa, the vertical clearance between the top of the pool or spa and the bottom of the barrier shall not exceed 4 inches (102 mm).

305.2.2 Openings. Openings in the barrier shall not allow passage of a 4-inch-diameter (102 mm) sphere.

305.2.3 Solid barrier surfaces. Solid barriers that do not have openings shall not contain indentations or protrusions that form handholds and footholds, except for normal construction tolerances and tooled masonry joints.

305.2.4 Mesh fence as a barrier. Mesh fences, other than chain link fences in accordance with Section 305.2.7, shall be installed in accordance with the manufacturer's instructions and shall comply with the following:

1. The bottom of the mesh fence shall be not more than 1 inch (25 mm) above the deck or installed surface or grade.
2. The maximum vertical clearance from the bottom of the mesh fence and the solid surface shall not permit the fence to be lifted more than 4 inches (102 mm) from grade or decking.
3. The fence shall be designed and constructed so that it does not allow passage of a 4-inch (102 mm) sphere under any mesh panel. The maximum vertical clearance from the bottom of the mesh fence and the solid surface shall be not greater than 4 inches (102 mm) from grade or decking.
4. An attachment device shall attach each barrier section at a height not lower than 45 inches (1143 mm) above grade. Common attachment devices include, but are not limited to, devices that provide the security equal to or greater than that of a hook-and-eye-type latch incorporating a spring-actuated retaining lever such as a safety gate hook.
5. Where a hinged gate is used with a mesh fence, the gate shall comply with Section 305.3.
6. Patio deck sleeves such as vertical post receptacles that are placed inside the patio surface shall be of a nonconductive material.
7. Mesh fences shall not be installed on top of onground *residential* pools.

305.2.4.1 Setback for mesh fences. The inside of a mesh fence shall be not closer than 20 inches (508 mm) to the nearest edge of the water of a pool or spa.

305.2.5 Closely spaced horizontal members. Where the barrier is composed of horizontal and vertical members and the distance between the tops of the horizontal members is less than 45 inches (1143 mm), the horizontal members shall be located on the pool or spa side of the fence. Spacing between vertical members shall not exceed 1³/₄ inches (44 mm) in width. Where there are decorative cutouts within vertical members, spacing within the cutouts shall not exceed 1³/₄ inches (44 mm) in width.

305.2.6 Widely spaced horizontal members. Where the barrier is composed of horizontal and vertical members and the distance between the tops of the horizontal members is 45 inches (1143 mm) or more, spacing between vertical members shall not exceed 4 inches (102 mm). Where there are decorative cutouts within vertical members, the interior width of the cutouts shall not exceed $1\frac{3}{4}$ inches (44 mm).

305.2.7 Chain link dimensions. The maximum opening formed by a chain link fence shall be not more than $1\frac{3}{4}$ inches (44 mm). Where the fence is provided with slats fastened at the top and bottom that reduce the openings, such openings shall be not greater than $1\frac{3}{4}$ inches (44 mm).

305.2.8 Diagonal members. Where the barrier is composed of diagonal members, the maximum opening formed by the diagonal members shall be not greater than $1\frac{3}{4}$ inches (44 mm). The angle of diagonal members shall be not greater than 45 degrees (0.79 rad) from vertical.

305.2.9 Clear zone. The required barrier height shall exist around the entire perimeter of the barrier and for a distance of 3 feet measured horizontally from the outside of the required barrier, free of structures, equipment or similar objects

305.3 Doors and gates. Doors and gates in barriers shall comply with the requirements of Sections 305.3.1 through 305.3.3 and shall be equipped to accommodate a locking device. Pedestrian access doors and gates shall open outward away from the pool or spa, shall be self-closing and shall have a self-latching device.

305.3.1 Utility or service doors and gates. Doors and gates not intended for pedestrian use, such as utility or service doors and gates, shall remain locked when not in use.

305.3.2 Double or multiple doors and gates. Double doors and gates or multiple doors and gates shall have not fewer than one leaf secured in place and the adjacent leaf shall be secured with a self-latching device.

305.3.3 Latch release. For doors and gates in barriers, the door and gate latch release mechanisms shall be in accordance with the following:

1. Where door and gate latch release mechanisms are accessed from the outside of the barrier and are not of the self-locking type, such mechanism shall be located above the finished floor or ground surface in accordance with the following:
 - 1.1. At public pools and spas, not less than 52 inches (1219 mm) and not greater than 54 inches (1372 mm).
 - 1.2. At residential pools and spas, not less than 54 inches (1372 mm).
2. Where door and gate latch release mechanisms are of the self-locking type such as where the lock is operated by means of a key, an electronic opener or the entry of a combination into an integral combination lock, the lock operation control and

the latch release mechanism shall be located above the finished floor or ground surface in accordance with the following:

- 2.1. At public pools and spas, not less than 34 inches and not greater than 48 inches (1219 mm).
- 2.2. At residential pools and spas, at not greater than 54 inches (1372 mm).
3. At private pools, where the only latch release mechanism of a self-latching device for a gate is located on the pool and spa side of the barrier, the release mechanism shall be located at a point that is at least 3 inches (76 mm) below the top of the gate.

305.3.4 Barriers adjacent to latch release mechanisms. Where a latch release mechanism is located on the inside of a barrier, openings in the door, gate and barrier within 18 inches (457 mm) of the latch shall not be greater than $\frac{1}{2}$ inch (12.7 mm) in any dimension.

305.4 Structure wall as a barrier. Where a wall of a dwelling or structure serves as part of the barrier and where doors, gates or windows provide direct access to the pool or spa through that wall, one of the following shall be required:

1. Operable windows having a sill height of less than 48 inches (1219 mm) above the indoor finished floor, doors and gates shall have an alarm that produces an audible warning when the window, door or their screens are opened. The alarm shall be *listed* and labeled as a water hazard entrance alarm in accordance with UL 2017.
2. In dwellings not required to be Accessible units, Type A units or Type B units, the operable parts of the alarm deactivation switches shall be located at not less than 54 inches (1372 mm) above the finished floor.
3. In dwellings that are required to be Accessible units, Type A units or Type B units, the operable parts of the alarm deactivation switches shall be located not greater than 54 inches (1372 mm) and not less than 48 inches (1219 mm) above the finished floor.
4. In structures other than dwellings, the operable parts of the alarm deactivation switches shall be located not greater than 54 inches (1372 mm) and not less than 48 inches (1220 mm) above the finished floor.
5. A *safety cover* that is *listed* and *labeled* in accordance with ASTM F1346 is installed for the pools and spas.
6. An *approved* means of protection, such as self-closing doors with self-latching devices, is provided. Such means of protection shall provide a degree of protection that is not less than the protection afforded by Item 1 or 2.

305.5 Onground residential pool structure as a barrier. An onground *residential* pool wall structure or a barrier mounted on top of an onground *residential* pool wall structure shall serve as a barrier where all of the following conditions are present:

1. Where only the pool wall serves as the barrier, the bottom of the wall is on grade, the top of the wall is

not less than 48 inches (1219 mm) above grade for the entire perimeter of the pool, the wall complies with the requirements of Section 305.2 and the pool manufacturer allows the wall to serve as a barrier.

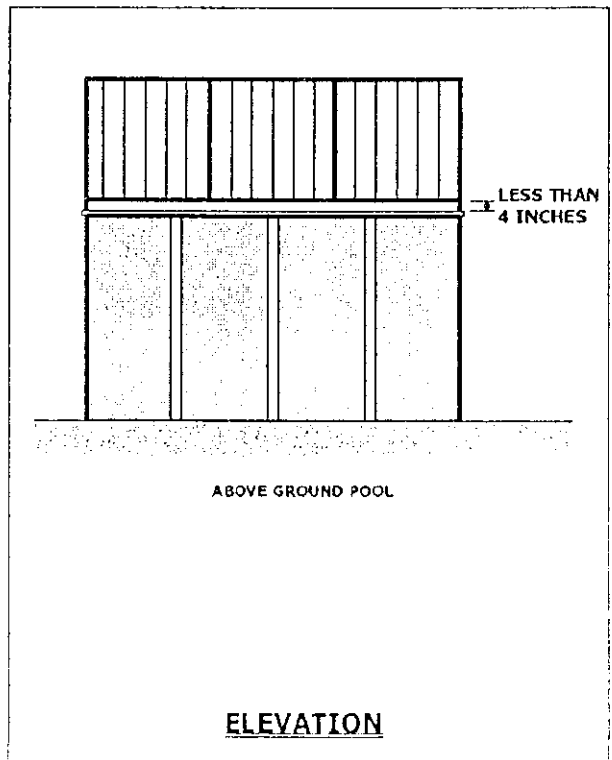
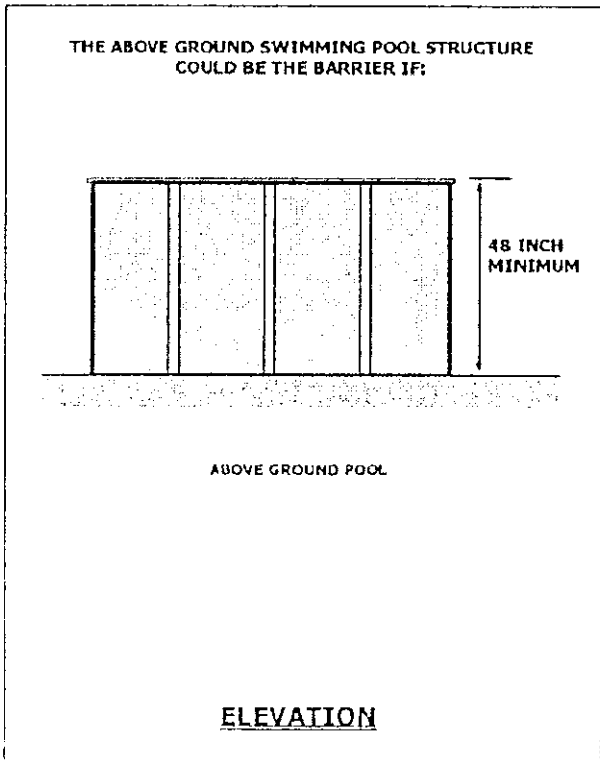
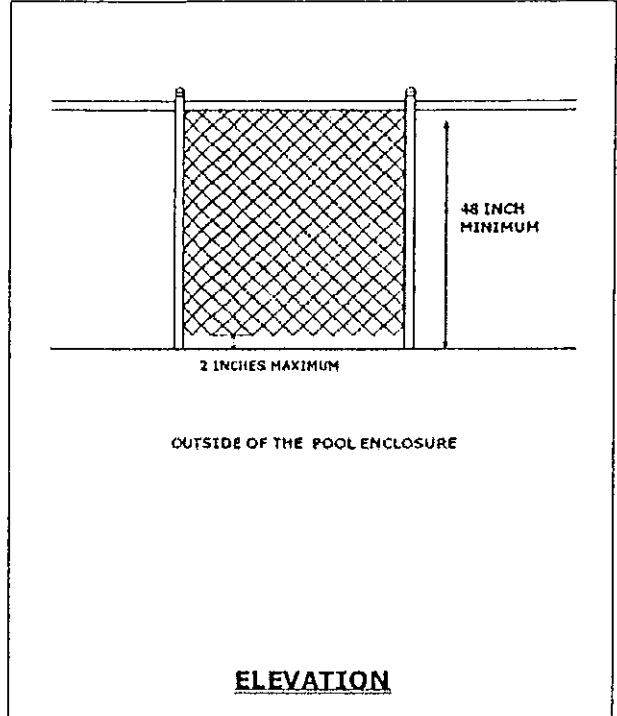
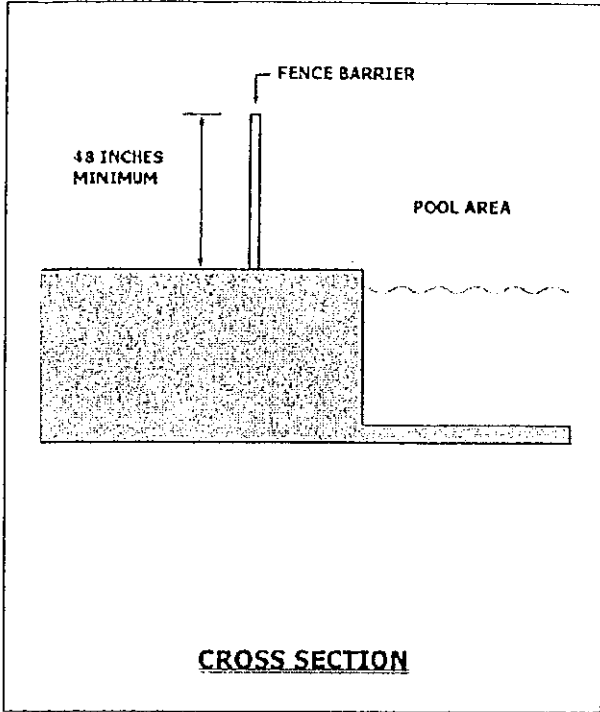
2. Where a barrier is mounted on top of the pool wall, the top of the barrier is not less than 48 inches (1219 mm) above grade for the entire perimeter of the pool, and the wall and the barrier on top of the wall comply with the requirements of Section 305.2.
3. Ladders or steps used as means of access to the pool are capable of being secured, locked or removed to prevent access except where the ladder or steps are surrounded by a barrier that meets the requirements of Section 305.
4. Openings created by the securing, locking or removal of ladders and steps do not allow the passage of a 4-inch (102 mm) diameter sphere.
5. Barriers that are mounted on top of onground *residential* pool walls are installed in accordance with the pool manufacturer's instructions.

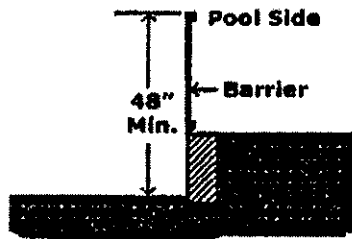
305.6 Natural barriers. In the case where the pool or spa area abuts the edge of a lake or other natural body of water, public access is not permitted or allowed along the shoreline, the required barriers extend to and beyond the water's edge not less than 18 inches, a barrier is not required between the natural body of water shoreline and the pool or spa when approved by the State Building Inspector

305.7 Natural topography. Natural topography that prevents direct access to the pool or spa area shall include but not be limited to mountains and natural rock formations. A natural barrier approved by the State Building Inspector shall be acceptable provided that the degree of protection is not less than the protection afforded by the requirements of Sections 305.2 through 305.5

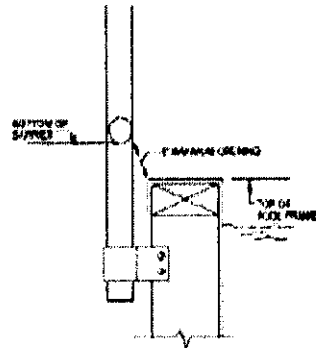
Barriers Required to Prevent Access



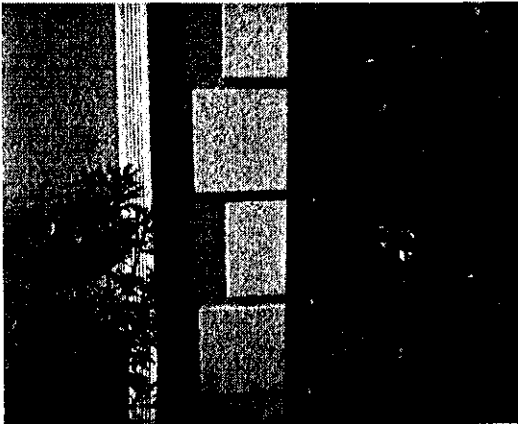


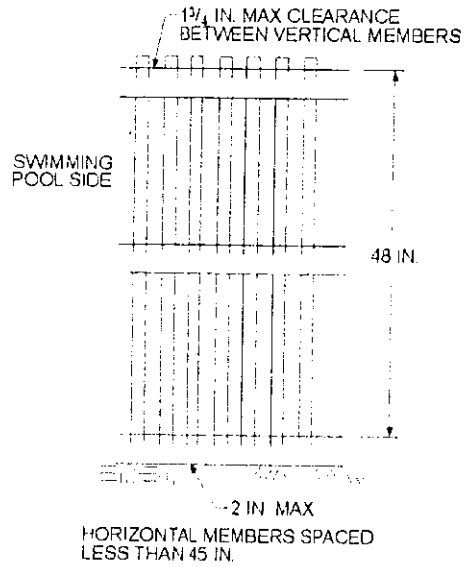
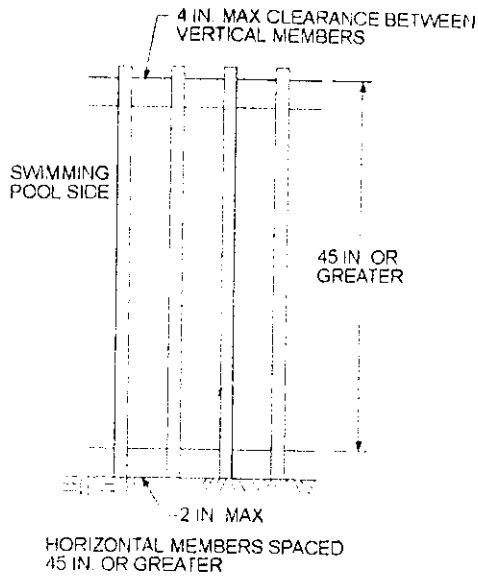


When there is a differential in grade, the barrier height is measured on the side away from the pool.



3. No protrusions





For SI: 1 inch = 25.4 mm.

6. Chain link dimensions

Mesh size **1-3/4"** square max.

Slats fastened at top or bottom, reduce to **1-3/4"**

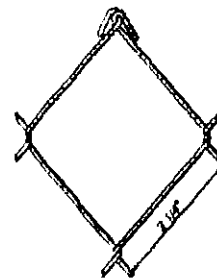
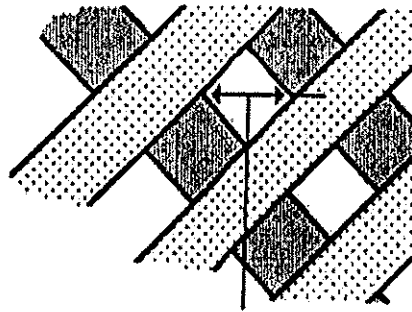


Figure 1188 A-118
CHAIN-LINK FENCE MESH FOR PRIVATE SWIMMING POOLS

7. Diagonal members:
1-3/4" maximum
openings



Barriers formed of diagonal members shall not have openings larger than 1 3/4" (44mm)

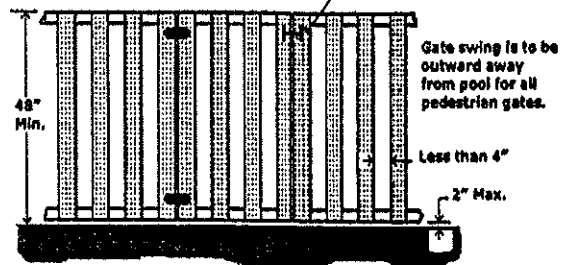
8. Access gates:

Comply with 1 – 7, *plus*

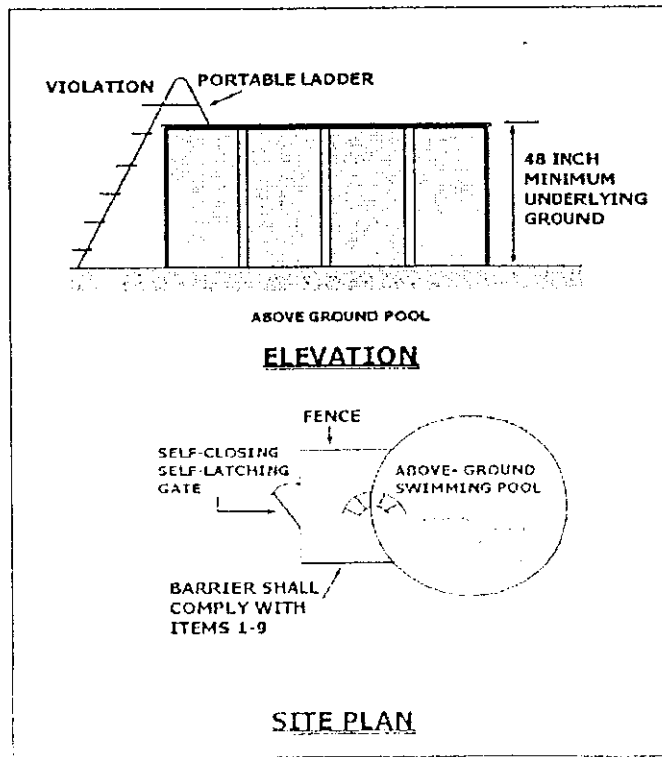
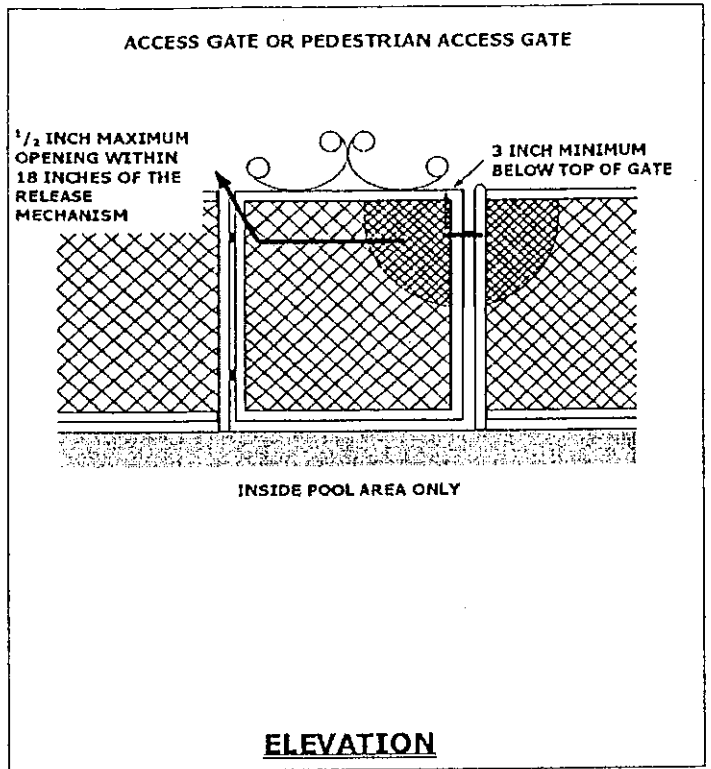
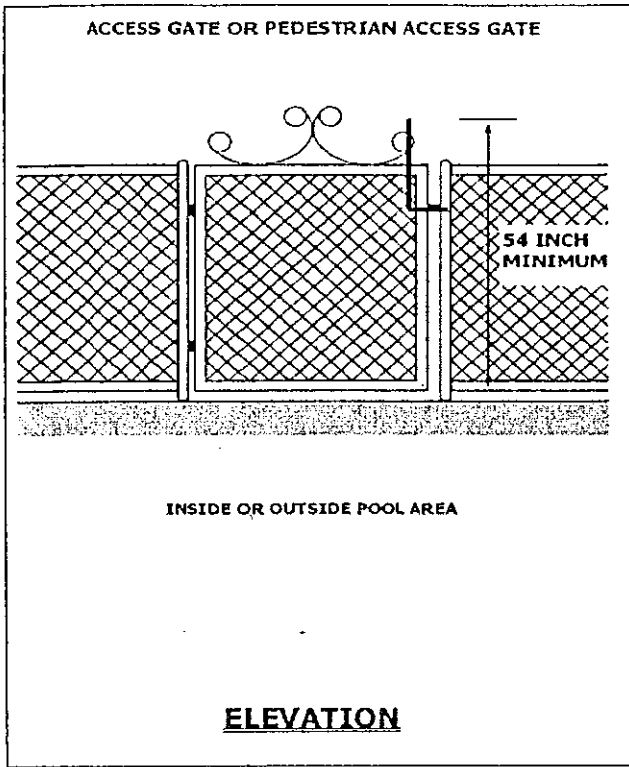
- Accommodate a locking device
- Open outward
- Self-closing, Self-latching
- Other gates self-latching
- Release mechanism less than 54" above bottom of gate:
 - Pool side, at least 3" below top of gate,
 - No opening greater than 1/2" within 18"



When the release mechanism is located less than 54" above the bottom of the gate, it must be on the pool side of the fence and at least 3" below the top of the fence. Otherwise, it can be on the outside.



All pool gates must be self-latching and equipped with locking devices. Pedestrian gates must also be self-closing.



THE DOOR ALARM SHALL:

- Produce an audible warning when the door and its screen are opened.
- Audible warning sounds within 7 seconds of opening the door and
- Sound continuously for 30 seconds minimum.
- Have a minimum sound pressure rating of 85 dba at 10 feet.
- Be distinctive from other household sounds.
- Automatically reset under all conditions.
- Be equipped with manual means to temporarily deactivate the alarm for a single opening from either direction.
- Allow deactivation to last not more than 15 seconds.
- Have deactivation touch pads/switches located a minimum of 54 inches above the door threshold.

OPTION 2 OF 3

- SELF-CLOSING AND SELF-LATCHING DEVICE
- SWING AWAY FROM POOL

54 INCH MINIMUM

ELEVATION

OPTION 1 OF 3

ALARM DEACTIVATION SWITCH OR TOUCHPAD

54 INCH MINIMUM

ELEVATION

OPTION 3 OF 3

HOUSE

APPROVED POWER SAFETY COVER
ASTM F1346

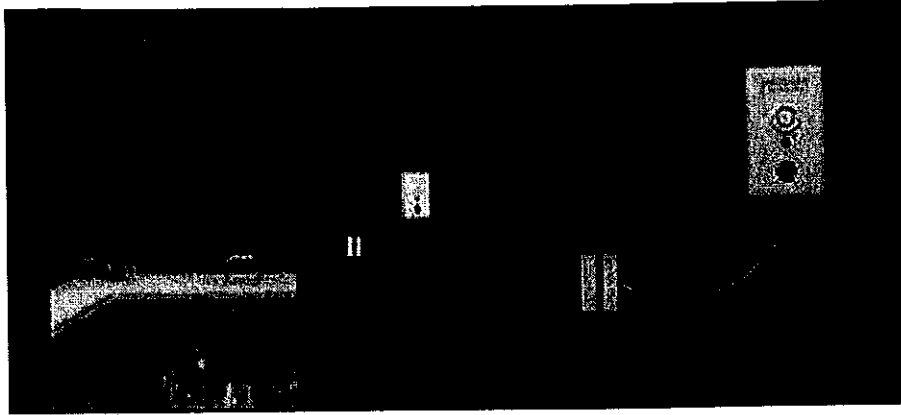
BACKYARD

SWIMMING POOL

FENCE (BARRIER) ENCLOSURE

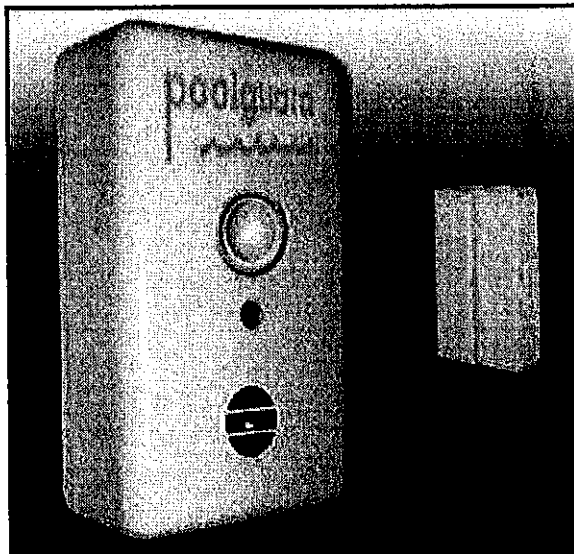
SITE PLAN

DOOR ALARM - Model DAPT-2 — SAMPLE EXAMPLE - NOT A PRODUCT ENDORSEMENT



POOLGUARD/PBM INDUSTRIES, INC. has been manufacturing pool alarms, door alarms, and gate alarms since 1982. All Poolguard products are proudly **Made in the USA**. Poolguard Door Alarms comply with all building codes and are UL Listed under **UL 2017**. The majority of children that drown in pools go out the back door first and Poolguard's Door Alarm can help protect those doors. Adult pass through feature allows 15 seconds for adults to pass through the door without the alarm sounding.

- UL Listed to UL 2017
- Important Safety Feature
- Complies With Building Codes
- Simple To Operate
- Automatic Reset
- Battery Powered
- Easy To Install
- 85 dB Horn At 10 Feet
- Pass Through Feature For Adults
- Low Battery Indicator



- The Door Alarm will sound in 7 seconds when a child opens the door, and the alarm will continue to sound until an adult comes to the door and resets the alarm.
- Poolguard Door Alarm will sound in 7 seconds even if a child goes through the door and closes it behind them.
- The Door Alarm is always on and will automatically reset under all conditions.
- Poolguard Door Alarm is equipped with an adult pass through feature that will allow adults to go through the door without the alarm sounding.
- Optional screen door kits can be purchased for the alarm, this kit allows you to get air through your screen door without the alarm sounding.
- Poolguard Door Alarm uses one 9-volt battery, (not included) with a battery life of approximately 1 year.
- The Door Alarm is equipped with a low battery indicator that will audibly alert you when your battery is getting low.
- Poolguard is the only door alarm that is UL listed under UL 2017 for water hazard entrance alarm equipment.

(CT Add – CGS 29-265a)

- Must be on building permit for construction or for substantial alteration
- One or more families - residence
- Must be installed with pool
- 50 db alarm when 15 lbs or more enters pool

Exempt: Hot tubs & portable spas

